

# Case Management

You Design  
We Deliver



Family & Children Services' Case Management program specializes in working with youth up to age 18 and their families and young adults ages 18-26 yrs. Case Management Services empower individuals/families to successfully participate in a community environment by providing services that are responsive, respectful, and adaptive to individual needs and preferences.

Case Management Services are flexible and strength based to meet client needs. Efforts are focused on empowering individuals with multiple service needs so they may achieve their goals, direct their own lives and reduce dependency on service providers.

“Our Case Manager works with my oldest son, but has also been extremely helpful with other family situations.”



“Our Case Manager has been more helpful than any other person we've been involved with.”

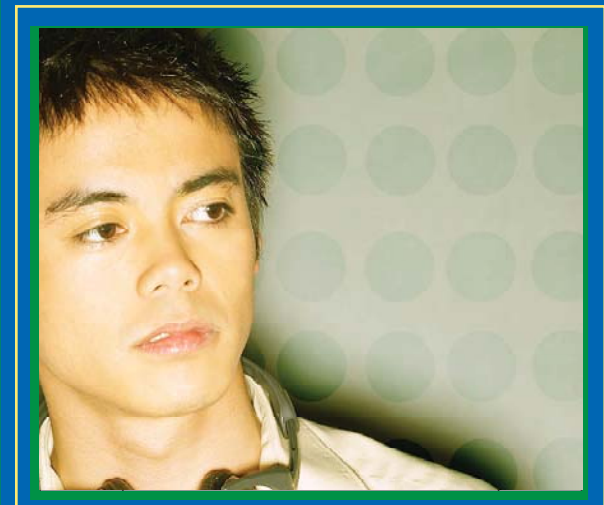
Using a Wraparound approach, Case Managers coordinate and monitor services and supports within community, educational, legal, and employment systems by:

- Using a strength-based, needs-driven approach
- Encouraging consumer choice throughout service involvement
- Helping consumers identify and build relationships with natural supports
- Providing advocacy, community-based referrals, and support
- Partnering with consumers to create and sustain community involvement
- Promoting wellness, recovery and self-determination
- Recognizing consumer's personal stage of change and addressing co-occurring (mental health and substance abuse) issues

To learn more about Case Management, the “S.O.S.” Independent Living Skills group, or to make a referral for either, contact:

Renee Schmidt, MSW, LMSW  
Case Management Supervisor  
269.373.0248 ext. 227  
[renees@fcsource.org](mailto:renees@fcsource.org)

Case Management services are provided through a contract with Kalamazoo Community Mental Health and Substance Abuse Services.



# CASE MANAGEMENT PROVIDES:

- Crisis intervention and support
- Voluntary, home and community based treatment services
- Clinical assessment and determination of youth and family needs
- Assistance in developing individualized, family-centered plans
- Integrated mental health and substance abuse treatment
- Parenting/Family education, information and support
- Advocacy, referral, and support within community and educational systems
- Coordination of psychiatric services
- A variety of clinical interventions including evidence based models
- Individual and family support services focused on community integration
- Support in developing and maintaining independence



Family & Children Services is a private, nonprofit, nonsectarian, human service organization begun in the early 1900's. Its mission has remained constant "...To support, strengthen and preserve the safety, well being and dignity of children, individuals and families".

The Agency receives funding through allocations from local United Ways, contracts with Community Mental Health programs and the Michigan Department of Human Services, insurance reimbursements, fees for service based on a sliding scale and contributions. We are accredited by the Council on Accreditation of Services for Families and Children.

Rosemary Gardiner, MSW  
Chief Executive Officer  
[rosemaryg@fcsource.org](mailto:rosemaryg@fcsource.org)

Case Management is a program of the Home and Community Intervention (HCI) Services

Renee Schmidt, MSW, LMSW  
Supervisor, Case Management  
269-373-0248 ext. 227  
[renees@fcsource.org](mailto:renees@fcsource.org)

Diane Marquess, MS, LPC  
Director  
Home and Community Intervention Services Kalamazoo  
269-373-0248 ext. 229  
[dianem@fcsource.org](mailto:dianem@fcsource.org)

\* All facilities of the Agency are barrier-free.

## Family & Children Services

A S O U R C E O F H O P E

1608 Lake Street  
Kalamazoo, MI 49001  
269.344.0202  
Fax 269.344.0285

535 Emmett Street  
Battle Creek, MI 49017  
269.965.3247  
Fax 269.966.4135

[www.fcsource.org](http://www.fcsource.org)



6.08

# Case Management

- support to realize your dreams •



## Kalamazoo County

## Family & Children Services

A S O U R C E O F H O P E